

# Anti-H\_SLC39A6 hIgG1 Antibody(Ladiratuzumab)

## Product Information

GM-26839AB-10	10 µg
GM-26839AB-100	100 µg
GM-26839AB-1000	1 mg

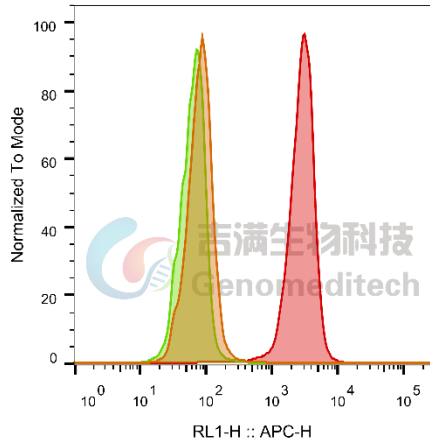
## Antibody Information

Species Reactivity	Human; Cynomolgus
Clone	Ladiratuzumab
Source/Isotype	Monoclonal human IgG1, κ
Application	Flow cytometry
Specificity	Detects SLC39A6
Gene	SLC39A6
Other Names	LIV-1; LIV1; ZIP6
Gene ID	25800(human), 101926643(cynomolgus)
Background	SLC39A6 is also known as LIV-1, ZIP-6 and Zinc transporter ZIP6. May act as a zinc-influx transporter. Highly expressed in the breast, prostate, placenta, kidney, pituitary, and corpus callosum. Weakly expressed in heart and intestine. Also highly expressed in cells derived from an adenocarcinoma of the cervix and lung carcinoma. The LIV-1 protein has also been implicated in certain cancerous conditions, e.g., breast cancer and prostate cancer. The detection of LIV-1 is associated with estrogen receptor-positive breast cancer, and the metastatic spread of these cancers to the regional lymph nodes.
Storage	Store at 2-8°C short term (1-2 weeks).Store at ≤ -20°C long term.Avoid repeated freeze-thaw.
Formulation	Phosphate-buffered solution, pH 7.2.
Endotoxin	< 1 EU/mg, determined by LAL gel clotting assay

## Data Examples

### Flow cytometry

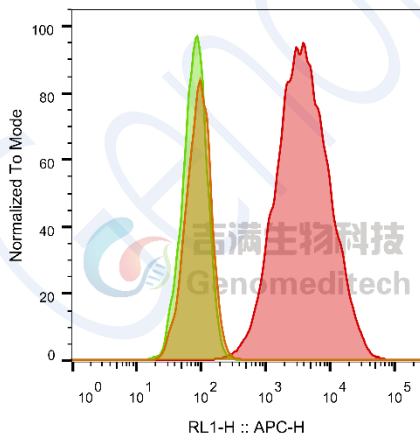
The recommended usage range is 0.5-4  $\mu\text{g}$  per test. H\_SLC39A6 LLC1 Cell Line was stained with Anti-H\_SLC39A6 hIgG1 Antibody (Catalog # GM-26839AB) or isotype control antibody, followed by anti-Human IgG APC-conjugated Secondary Antibody.



SampleID	Geometric Mean : RL1-H
LLC1 anti-H_SLC39A6+APC-2nd Ab	82.6
LLC1 H_SLC39A6 H_IgG+APC-2nd Ab	63.5
LLC1 H_SLC39A6 anti-H_SLC39A6+APC-2nd Ab	2684

### Flow cytometry

The recommended usage range is 0.5-4  $\mu\text{g}$  per test. Cynomolgus\_SLC39A6 CHO-K1 Cell Line (Catalog # GM-C15382) was stained with Anti-H\_SLC39A6 hIgG1 Antibody (Catalog # GM-26839AB) or isotype control antibody, followed by anti-Human IgG APC-conjugated Secondary Antibody.



SampleID	Geometric Mean : RL1-H
CHO-K1 anti-H_SLC39A6+APC-2nd Ab	90.9
CHO-K1 Cyno_SLC39A6 H_IgG+APC-2nd Ab	80.0
CHO-K1 Cyno_SLC39A6 anti-H_SLC39A6+APC-2nd Ab	3748

Fig. 流式验证结果